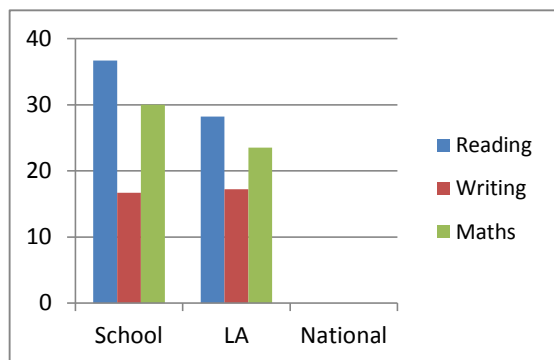


Key Stage 1 – Figure Analysis 2016

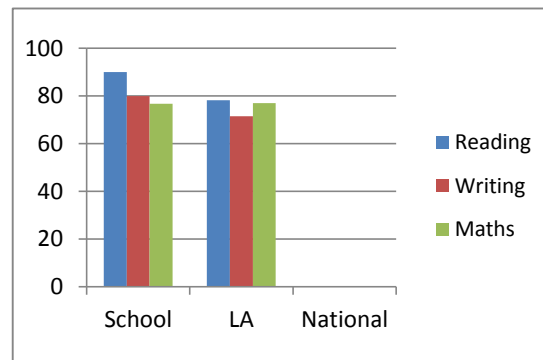
- Pupils make good progress through the school from their different starting points. When compared with pupils nationally and locally in 2016, the attainment of Year 2 pupils was high in all subjects.
- Reliable school assessment information which is checked by the local authority, robust monitoring, tracking and analysing systems in school indicate that all pupils are making good progress. This is consistent across subjects.
- The overall proportions of children reaching the expected standard in the all-important combined reading, writing and mathematics is 73% compared with 67% locally.
- At Reading 90% attained the standard with 37% above the standard; Writing is 80% (at) and 17% (above) ; Maths is 77% and 30%.
- The test and curriculum for 2016 was significantly more challenging and the figures show a rising trend on the 2015 Level 2b (expected) and Level 3 (better than expected) standard.
- Whilst the attainment of the disadvantaged pupils was lower than the rest of the class, all achieved well. This is as a result of the pupils receiving tailored, high-quality intervention and additional support in class.
- The most able pupils made good progress. Consistently more pupils at St Mary's achieved the working at greater depth standard than locally in reading and maths. Pupils achieve well because, teachers know who the most able pupils are and provide challenging tasks to stretch them even further.

Key Stage 1 - Headline Figures **St Mary's RC Primary School** **2016**

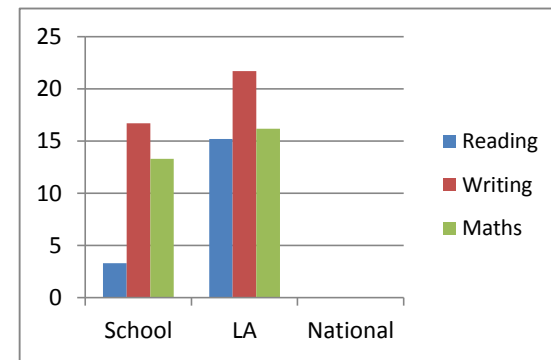
2016	Reading		Writing		Maths		RWM		Science	
	School	36.7	School	16.7	School	30	School	13.3		
% working at greater depth within the expected standard	LA	28.2	LA	17.2	LA	23.5	LA	12.2		
	National		National		National		National			
	School	90	School	80	School	76.7	School	73.3	School	90
% working at or above the expected standard	LA	78.3	LA	71.5	LA	77	LA	67.2	LA	81.4
	National		National		National		National		National	
	School	3.3	School	16.7	School	13.3	School		School	10
% working towards the expected standard	LA	15.2	LA	21.7	LA	16.2	LA	16.2	LA	18.4
	National		National		National		National		National	
	School	3.3	School	3.3	School	10				
% at Foundations for the expected standard (Pre-Key Stage Foundation)	LA	3.6	LA	3.3	LA	3.9				
	National		National		National					
	School	3.3	School	0	School	0				
% below the standard of the pre-key stage	LA	2.7	LA	3.3	LA	2.7				
	National		National		National					
	School	3.3	School	0	School	0				



% working at a greater depth within the expected standard

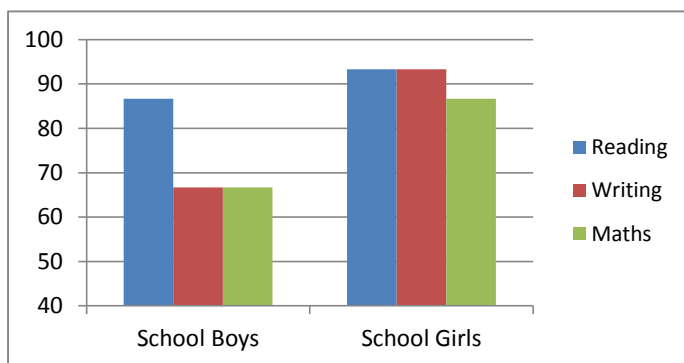


% working at or above the expected standard

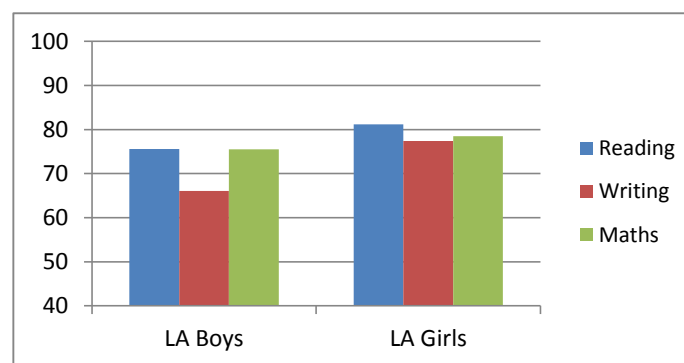


% working towards the expected standard

Number of boys: 15 Number of girls: 15	Reading		Writing		Maths	
% working at greater depth within the expected standard	School Boys	33.3	School Boys	13.3	School Boys	33.3
	School Girls	40	School Girls	20	School Girls	26.7
	School gender gap	6.7	School gender gap	6.7	School gender gap	6.6
	LA Boys	24.3	LA Boys	11.5	LA Boys	24.1
	LA Girls	32.5	LA Girls	23.5	LA Girls	22.7
	LA gender gap	8.2	LA gender gap	12	LA gender gap	1.4
% working at or above the expected standard	School Boys	86.7	School Boys	66.7	School Boys	66.7
	School Girls	93.3	School Girls	93.3	School Girls	86.7
	School gender gap	6.6	School gender gap	26.6	School gender gap	20
	LA Boys	75.6	LA Boys	66.1	LA Boys	75.5
	LA Girls	81.2	LA Girls	77.4	LA Girls	78.5
	LA gender gap	5.6	LA gender gap	11.3	LA gender gap	3
% working towards the expected standard	School Boys	6.7	School Boys	33.3	School Boys	26.7
	School Girls	0	School Girls	0	School Girls	0
	School gender gap	6.7	School gender gap	33.3	School gender gap	26.7
	LA Boys	16.1	LA Boys	24.9	LA Boys	16.3
	LA Girls	14.3	LA Girls	18.2	LA Girls	16.2
	LA gender gap	1.8	LA gender gap	6.7	LA gender gap	0.1

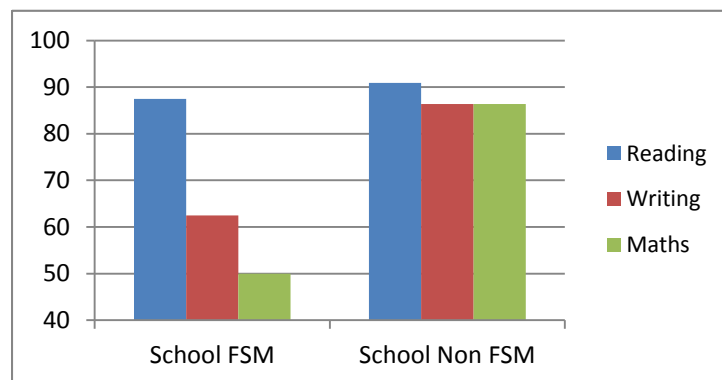


% working at or above the expected standard (School)

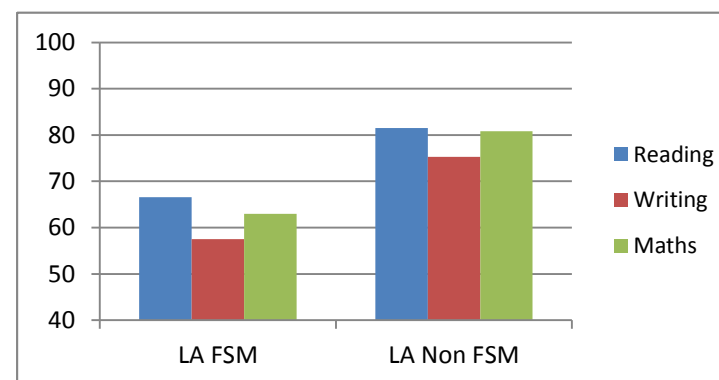


% working at or above the expected standard (LA)

Number of FSM: 8 Number of Non FSM: 22	Reading		Writing		Maths	
	% working at greater depth within the expected standard	School FSM	12.5	School FSM	12.5	School FSM
	School Non FSM	45.5	School Non FSM	18.2	School Non FSM	31.8
	School FSM gap	33	School FSM gap	5.7	School FSM gap	6.8
	LA FSM	16.6	LA FSM	8.6	LA FSM	15.7
	LA Non FSM	31.4	LA Non FSM	19.6	LA Non FSM	25.6
	LA FSM gap	14.8	LA FSM gap	11	LA FSM gap	9.9
% working at or above the expected standard	School FSM	87.5	School FSM	62.5	School FSM	50
	School Non FSM	90.9	School Non FSM	86.4	School Non FSM	86.4
	School FSM gap	3.4	School FSM gap	23.9	School FSM gap	36.4
	LA FSM	66.6	LA FSM	57.5	LA FSM	63
	LA Non FSM	81.5	LA Non FSM	75.3	LA Non FSM	80.8
	LA FSM gap	14.9	LA FSM gap	17.8	LA FSM gap	17.8
% working towards the expected standard	School FSM	0	School FSM	25	School FSM	25
	School Non FSM	4.5	School Non FSM	13.6	School Non FSM	9.1
	School FSM gap	-4.5	School FSM gap	11.4	School FSM gap	15.9
	LA FSM	20.4	LA FSM	29.1	LA FSM	24
	LA Non FSM	13.8	LA Non FSM	19.6	LA Non FSM	14.1
	LA FSM gap	6.6	LA FSM gap	9.5	LA FSM gap	9.9

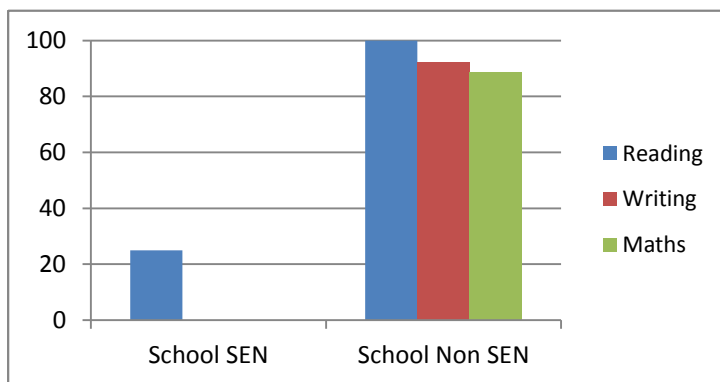


% working at or above the expected standard (School)

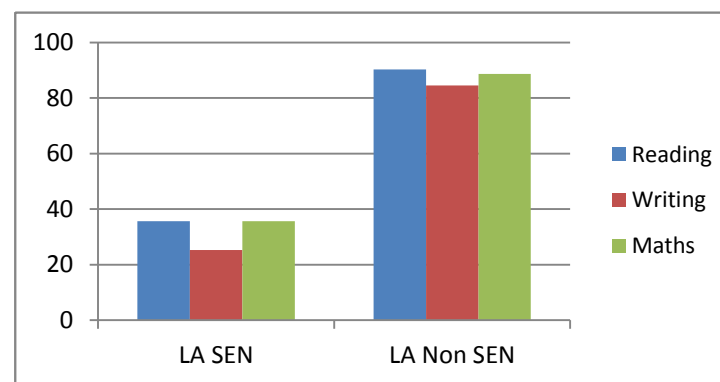


% working at or above the expected standard (LA)

Number with SEN: 4 Number Non SEN: 26	Reading		Writing		Maths	
% working at greater depth within the expected standard	School SEN	0	School SEN	0	School SEN	0
	School Non SEN	42.3	School Non SEN	19.2	School Non SEN	34.6
	School SEN gap	42.3	School SEN gap	19.2	School SEN gap	34.6
	LA SEN	4.3	LA SEN	1.4	LA SEN	5.7
	LA Non SEN	34.9	LA Non SEN	21.7	LA Non SEN	28.5
	LA SEN gap	30.6	LA SEN gap	20.3	LA SEN gap	22.8
% working at or above the expected standard	School SEN	25	School SEN	0	School SEN	0
	School Non SEN	100	School Non SEN	92.3	School Non SEN	88.5
	School SEN gap	75	School SEN gap	92.3	School SEN gap	88.5
	LA SEN	35.6	LA SEN	25.3	LA SEN	35.6
	LA Non SEN	90.3	LA Non SEN	84.5	LA Non SEN	88.6
	LA SEN gap	54.7	LA SEN gap	59.2	LA SEN gap	53
% working towards the expected standard	School SEN	25	School SEN	75	School SEN	50
	School Non SEN	0	School Non SEN	7.7	School Non SEN	7.7
	School SEN gap	25	School SEN gap	67.3	School SEN gap	42.3
	LA SEN	38	LA SEN	47	LA SEN	36.1
	LA Non SEN	8.8	LA Non SEN	14.6	LA Non SEN	10.6
	LA SEN gap	29.2	LA SEN gap	32.4	LA SEN gap	25.5

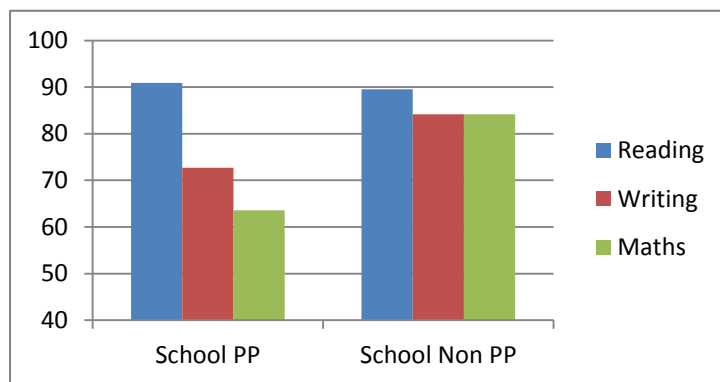


% working at or above the expected standard (School)

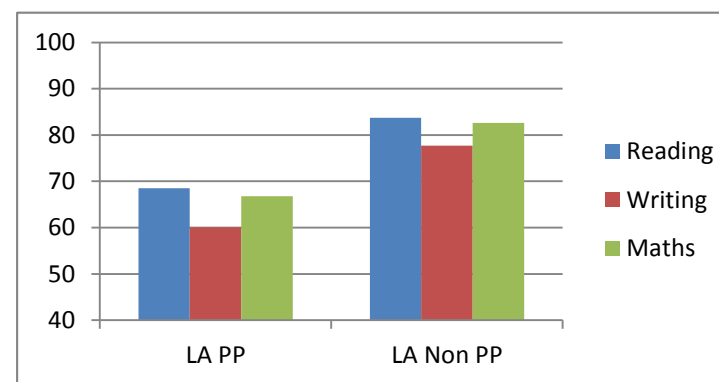


% working at or above the expected standard (LA)

Number of Pupil Premium: 11 Number of non Pupil Prem:19	Reading		Writing		Maths	
% working at greater depth within the expected standard	School PP	18.2	School PP	9.1	School PP	18.2
	School Non PP	47.4	School Non PP	21.1	School Non PP	36.8
	School PP gap	29.2	School PP gap	12	School PP gap	18.6
	LA PP	18.4	LA PP	9.9	LA PP	16.4
	LA Non PP	33.6	LA Non PP	21.2	LA Non PP	27.4
	LA PP gap	15.2	LA PP gap	11.3	LA PP gap	11
% working at the expected standard	School PP	90.9	School PP	72.7	School PP	63.6
	School Non PP	89.5	School Non PP	84.2	School Non PP	84.2
	School PP gap	1.4	School PP gap	11.5	School PP gap	20.6
	LA PP	68.5	LA PP	60.1	LA PP	66.8
	LA Non PP	83.7	LA Non PP	77.7	LA Non PP	82.6
	LA PP gap	15.2	LA PP gap	17.6	LA PP gap	15.8
% working towards the expected standard	School PP	9.1	School PP	27.3	School PP	27.3
	School Non PP	0	School Non PP	10.5	School Non PP	5.3
	School PP gap	9.1	School PP gap	16.8	School PP gap	22
	LA PP	20.8	LA PP	28.6	LA PP	22.3
	LA Non PP	12.2	LA Non PP	17.9	LA Non PP	12.9
	LA PP gap	8.6	LA PP gap	10.7	LA PP gap	9.4



% working at the expected standard (School)



% working at the expected standard (LA)

Key Stage 2 – Figure Analysis 2016

The 2016 key stage 2 assessments are the first which assess the new, more challenging national curriculum which was introduced in 2014. New tests and interim frameworks for teacher assessment have been introduced to reflect the revised curriculum. Results are no longer reported as levels, and each pupil will now receive their test results as a scaled score and teacher assessments based on the standards in the interim framework.

Now that the results have been published, here are our school's performance reports for 2016:

2016 Key Stage 2 results are above the national average in, writing, mathematics and grammar, spelling and punctuation and lower by 1% in reading.

The overall proportions of children reaching the expected standard in the all-important combined reading, writing and mathematics result is also 1% lower than the national figure.

Attainment				
Cohort 23			Nat = national	
Key stage 2	%working at expected or above.		% high	
	All	Nat	All	Nat
Reading	65	66	9	19
Writing	83	74	26	15
Math's	83	70	26	17
RWM	52	53	9	5
SPAG	78	72	22	22
Science	78	81		

Progress across the school for all groups of pupils is now good. Strict monitoring procedures are in place pupils' books are now demonstrating rapid improvements in reading, writing and mathematics.

The school works to close the gaps between disadvantaged pupils and their peers which is now highly effective. As a result, these pupils will perform at least as well as other pupils nationally in all subjects. 2016 results show the disadvantaged children did perform lower than their peers in school

in reading; however they perform at a similar level in writing, maths and GPS. A number of Pupil Premium Pupils are low attaining SEN pupils too.

Male and female pupils perform at a similar level. Girls overall, perform better than boys in reading and writing but boys attain higher than girls in Maths.

The school ensures that each pupil is an articulate and well-rounded individual and as a result they are ready for their secondary schools.

Key Stage 2 - Headline Figures

St Mary's RC Primary School

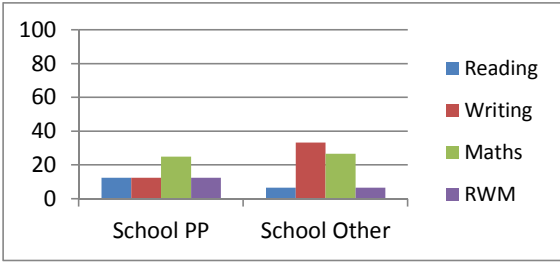
2016

KS2 2016 Cohort details	2016	Reading		GPS		Maths		Writing	
		School	LA	School	LA	School	LA	School	LA
No of Year 6 pupils: 23 One pupil = 4.3%	% working at greater depth within the expected standard	School	8.7	School	21.7	School	26.1	School	26.1
LA		17.5	LA	20.5	LA	16.6	LA	25.6	
National		19	National	23	National	17	National	15	
No of boys: 15 No of girls: 8	% working at the expected standard	School	65.2	School	78.3	School	82.6	School	82.6
LA		67.2	LA	74.2	LA	74.7	LA	81.4	
National		66	National	72	National	70	National	74	
No of FSM pupils: 6 No of non FSM pupils: 17	% working towards the expected standard	School	30.4	School	17.4	School	13	School	17.4
LA		29.7	LA	22.8	LA	22.2	LA	18.6	
National		30.9	National	24.2	National	27	National	25.6	
No of PP pupils: 8 No of non PP pupils: 15	Average scaled score	School	101.9	School	104.9	School	106.6		
LA		102.7	LA	104.0	LA	103.5			
National		103	National	104	National	103			
No of SEN pupils: 4 No of non SEN pupils: 19	Average progress	School	0.5			School	4.3	School	3.5
LA		0.3	LA			0.5	LA	2.2	
National		-5	National			-5	National	-7	

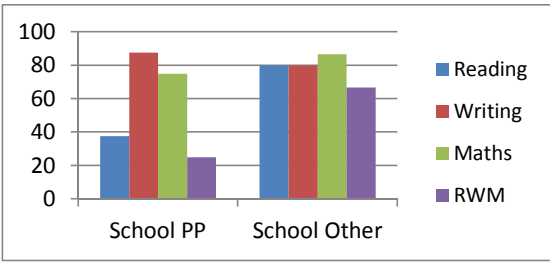
% Working towards the expected standard in Reading, Writing and Maths	School	4.3
	LA	8.6
	National	12
% Achieved the expected standard in Reading, Writing and Maths	School	52.2
	LA	57.2
	National	53
% working at a greater depth within the expected standard in RWM	School	8.7
	LA	6.5
	National	5



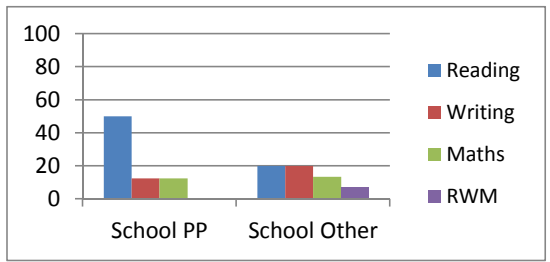
No of PP pupils: 8 No. of non PP pupils: 15									
2016	Reading		Writing		Maths		Reading, writing and Maths		
% working at a greater depth within the expected standard	School PP	12.5	School PP	12.5	School PP	25	School PP	12.5	
	School Other	6.7	School Other	33.3	School Other	26.7	School Other	6.7	
	School gap	5.8	School gap	20.8	School gap	1.7	School gap	5.8	
	LA PP	10.9	LA PP	19.2	LA PP	10	LA PP	3.2	
	LA Other	22.7	LA Other	30.6	LA Other	21.7	LA Other	9.1	
	LA gap	11.8	LA gap	11.4	LA gap	11.7	LA gap	5.9	
% working at the expected standard	School PP	37.5	School PP	87.5	School PP	75	School PP	25	
	School Other	80	School Other	80	School Other	86.7	School Other	66.7	
	School gap	42.5	School gap	7.5	School gap	11.7	School gap	41.7	
	LA PP	56.6	LA PP	74.7	LA PP	67	LA PP	45.6	
	LA Other	75.6	LA Other	86.6	LA Other	80.7	LA Other	66.3	
	LA gap	19	LA gap	11.9	LA gap	13.7	LA gap	20.7	
% working towards the expected standard	School PP	50	School PP	12.5	School PP	12.5	School PP	0	
	School Other	20	School Other	20	School Other	13.3	School Other	6.7	
	School gap	30	School gap	7.5	School gap	0.8	School gap	6.7	
	LA PP	38.6	LA PP	25.3	LA PP	28.1	LA PP	12.2	
	LA Other	22.7	LA Other	13.3	LA Other	17.4	LA Other	5.7	
	LA gap	15.9	LA gap	12	LA gap	10.7	LA gap	6.5	



% working at a greater depth within the expected standard



% working at the expected standard

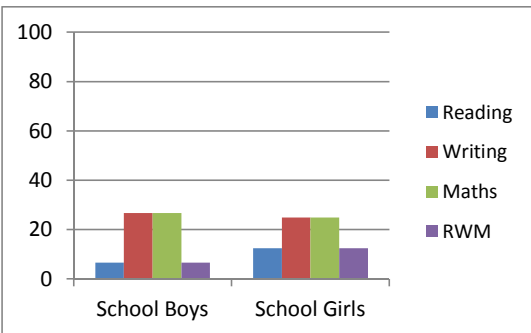


% working towards the expected standard

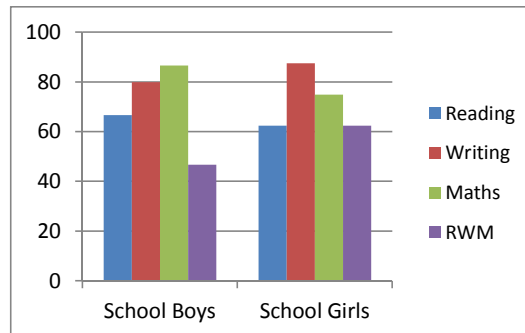
Key Stage 2 - Gender	St Mary's RC Primary School	2016
-----------------------------	------------------------------------	-------------

No of boys: 15
No. of girls: 8

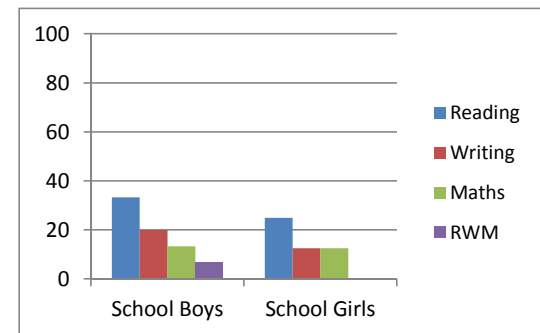
2016	Reading		Writing		Maths		Reading, Writing and Maths	
% working at a greater depth within the expected standard	School Boys	6.7	School Boys	26.7	School Boys	26.7	School Boys	6.7
	School Girls	12.5	School Girls	25	School Girls	25	School Girls	12.5
	School gender gap	5.8	School gender gap	1.7	School gender gap	1.7	School gender gap	5.8
	LA Boys	14.7	LA Boys	18.6	LA Boys	18.6	LA Boys	6.4
	LA Girls	20.3	LA Girls	14.6	LA Girls	14.6	LA Girls	6.6
	LA gender gap	5.6	LA gender gap	4	LA gender gap	4	LA gender gap	0.2
% working at the expected standard	School Boys	66.7	School Boys	80	School Boys	86.7	School Boys	46.7
	School Girls	62.5	School Girls	87.5	School Girls	75	School Girls	62.5
	School gender gap	4.2	School gender gap	7.5	School gender gap	11.7	School gender gap	15.8
	LA Boys	64.3	LA Boys	75.7	LA Boys	75.8	LA Boys	53.6
	LA Girls	70.1	LA Girls	87.1	LA Girls	73.5	LA Girls	60.7
	LA gender gap	5.8	LA gender gap	11.4	LA gender gap	2.3	LA gender gap	7.1
% working towards the expected standard	School Boys	33.3	School Boys	20	School Boys	13.3	School Boys	6.7
	School Girls	25	School Girls	12.5	School Girls	12.5	School Girls	0
	School gender gap	8.3	School gender gap	7.5	School gender gap	0.8	School gender gap	6.7
	LA Boys	31.9	LA Boys	24.3	LA Boys	20.3	LA Boys	10
	LA Girls	27.4	LA Girls	12.8	LA Girls	24.1	LA Girls	7.2
	LA gender gap	4.5	LA gender gap	11.5	LA gender gap	3.8	LA gender gap	2.8



% working at a greater depth within the expected standard



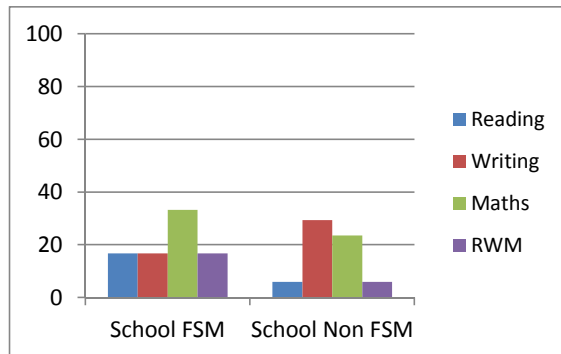
% working at the expected standard



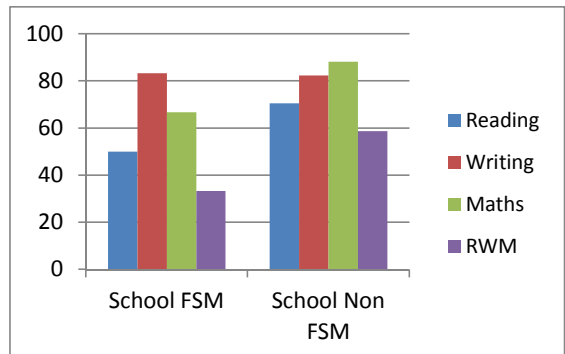
% working towards the expected standard

No FSM pupils: 6
No. Non FSM pupils: 17

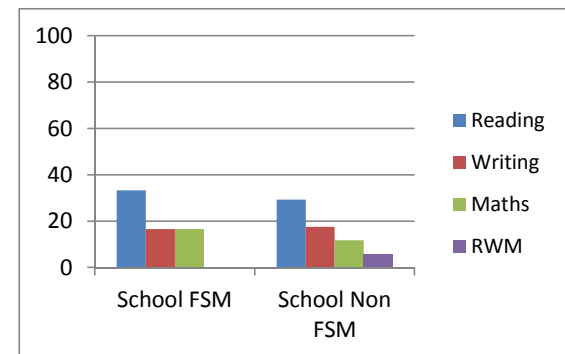
2016	Reading		Writing		Maths		Reading, Writing and Maths	
% working at a greater depth within the expected standard	School FSM	16.7	School FSM	16.7	School FSM	33.3	School FSM	16.7
	School Non FSM	5.9	School Non FSM	29.4	School Non FSM	23.5	School Non FSM	5.9
	School FSM gap	10.8	School FSM gap	12.7	School FSM gap	9.8	School FSM gap	10.8
	LA FSM	8.1	LA FSM	16.9	LA FSM	7.5	LA FSM	2.4
	LA Non FSM	20	LA Non FSM	28	LA Non FSM	19.1	LA Non FSM	7.6
	LA FSM gap	11.9	LA FSM gap	11.1	LA FSM gap	11.6	LA FSM gap	5.2
% working at the expected standard	School FSM	50	School FSM	83.3	School FSM	66.7	School FSM	33.3
	School Non FSM	70.6	School Non FSM	82.4	School Non FSM	88.2	School Non FSM	58.8
	School FSM gap	20.6	School FSM gap	-0.9	School FSM gap	21.5	School FSM gap	25.5
	LA FSM	51.8	LA FSM	68.9	LA FSM	63.6	LA FSM	41.6
	LA Non FSM	71.4	LA Non FSM	84.8	LA Non FSM	77.7	LA Non FSM	61.4
	LA FSM gap	19.6	LA FSM gap	15.9	LA FSM gap	14.1	LA FSM gap	19.8
% working towards the expected standard	School FSM	33.3	School FSM	16.7	School FSM	16.7	School FSM	0
	School Non FSM	29.4	School Non FSM	17.6	School Non FSM	11.8	School Non FSM	5.9
	School FSM gap	3.9	School FSM gap	0.9	School FSM gap	4.9	School FSM gap	5.9
	LA FSM	42.5	LA FSM	30.8	LA FSM	30.7	LA FSM	15.4
	LA Non FSM	26.2	LA Non FSM	15.2	LA Non FSM	19.8	LA Non FSM	6.7
	LA FSM gap	16.3	LA FSM gap	15.6	LA FSM gap	10.9	LA FSM gap	8.7



% working at a greater depth within the expected standard

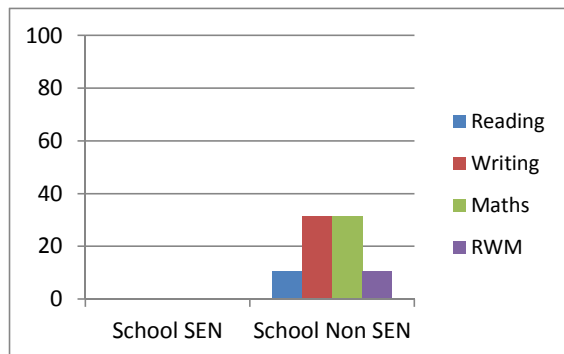


% working at the expected standard

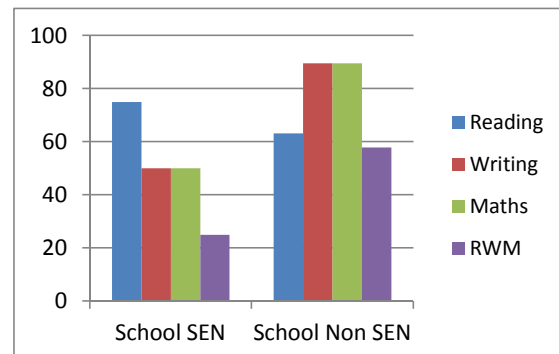


% working towards the expected standard

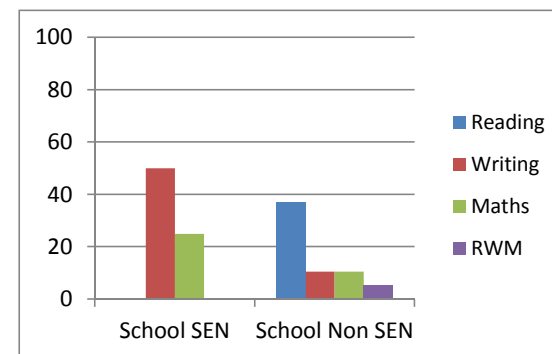
No SEN pupils: 4 No. Non SEN pupils: 19									
2016	Reading		Writing		Maths		Reading, Writing and Maths		
% working at a greater depth within the expected standard	School SEN	0	School SEN	0	School SEN	0	School SEN	0	
	School Non SEN	10.5	School Non SEN	31.6	School Non SEN	31.6	School Non SEN	10.5	
	School SEN gap	10.5	School SEN gap	31.6	School SEN gap	31.6	School SEN gap	10.5	
	LA SEN	3.9	LA SEN	2.2	LA SEN	3.3	LA SEN	0.8	
	LA Non SEN	21.7	LA Non SEN	32.8	LA Non SEN	20.7	LA Non SEN	8.2	
	LA SEN gap	17.8	LA SEN gap	30.6	LA SEN gap	17.4	LA SEN gap	7.4	
% working at the expected standard	School SEN	75	School SEN	50	School SEN	50	School SEN	25	
	School Non SEN	63.2	School Non SEN	89.5	School Non SEN	89.5	School Non SEN	57.9	
	School SEN gap	11.8	School SEN gap	39.5	School SEN gap	39.5	School SEN gap	32.9	
	LA SEN	34.4	LA SEN	38	LA SEN	41.9	LA SEN	17.1	
	LA Non SEN	77.3	LA Non SEN	94.7	LA Non SEN	84.8	LA Non SEN	69.5	
	LA SEN gap	42.9	LA SEN gap	56.7	LA SEN gap	42.9	LA SEN gap	52.4	
% working towards the expected standard	School SEN	0	School SEN	50	School SEN	25	School SEN	0	
	School Non SEN	36.8	School Non SEN	10.5	School Non SEN	10.5	School Non SEN	5.3	
	School SEN gap	36.8	School SEN gap	39.5	School SEN gap	14.5	School SEN gap	5.3	
	LA SEN	53.2	LA SEN	62	LA SEN	45.5	LA SEN	28.7	
	LA Non SEN	22.4	LA Non SEN	5.2	LA Non SEN	15	LA Non SEN	2.4	
	LA SEN gap	30.8	LA SEN gap	56.8	LA SEN gap	30.5	LA SEN gap	26.3	



% working at a greater depth within the expected standard



% working at the expected standard



% working towards the expected standard

Expected Standards