

*Dr Fog Presents*

Year Five Mental Arithmetic  
Test 4 ( end of week 7 and 8)

**5 Second Questions!**

1. Write the number two thousand seven hundred in figures.

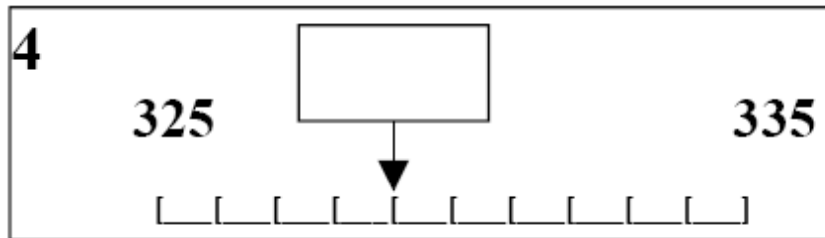
2. Look at the number sentence below. Write the correct value in the missing box.

$$2 \quad \boxed{\phantom{00}} + 32 = 100$$

3. Multiply one hundred and twenty five by ten.

<b>125</b>	<b>10</b>
------------	-----------

4. On your answer sheet is a scale. What is the number shown by the arrow?



5. It is 697 miles from London to Madrid.  
Round this distance to the nearest ten  
miles.

10 second response



6. Look at the numbers below. Write the number which is exactly divisible by five and ten.

<b>55</b>	<b>150</b>
<b>5</b>	<b>105</b>

7. Write down the largest of the five numbers on your sheet.

<b>7</b>	<b>7060</b>	<b>6720</b>	<b>6070</b>
	<b>7070</b>	<b>6170</b>	

8. What fraction of 1 metre is 50cm?

9. What is 25% of £10?

10. What is three less than four thousand?

11. Look at the number sequence below. Which number is missing from the empty box?

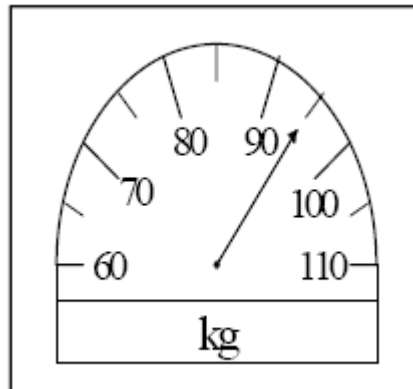
<b>11</b>
<b>6, 13, 20, <input type="text"/></b>

12. Decrease 72 by 34?

13. What is half of 74?



14. Look at the scale below. What measurement does it show?

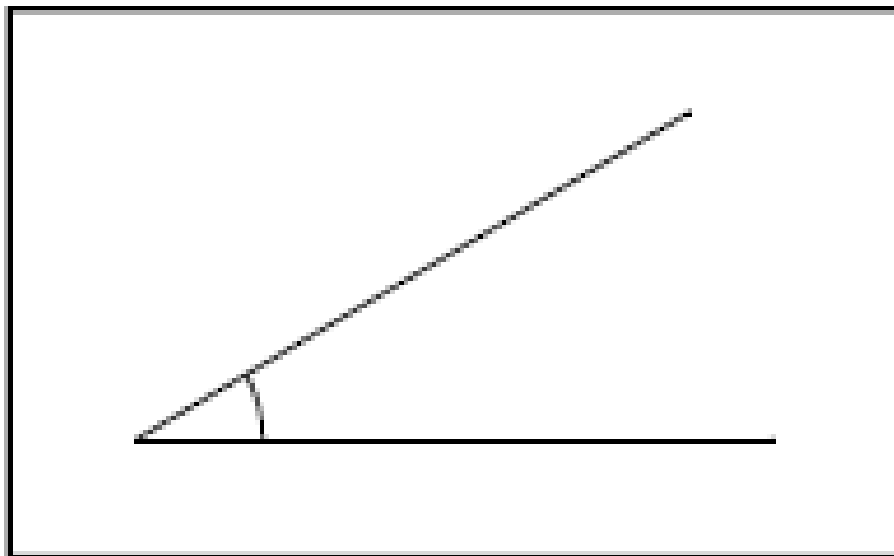


15. Chews cost 5 pence. How much would fourteen chews cost?

15 second response

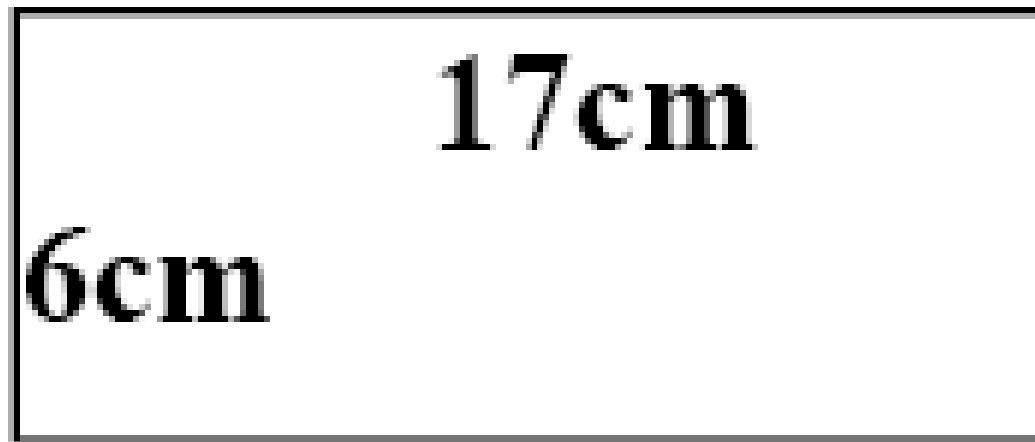
16. How many days are there in the month  
of June?

17. Look at the drawing below. Estimate the size of the angle.



18. Bill bought a tin of paint for £3.75. What was this change from £5?

19. Look at the rectangle on your answer sheet.  
What is the perimeter of the rectangle?



20. 8000 metres is equivalent to how many kilometres?



Time to swap over your papers!

1	2700	8	$\frac{1}{2}$	15	70p
2	68	9	£2.50	16	30
3	1250	10	3997	17	25 to 35
4	329	11	27	18	£1.25
5	700	12	38	19	46 cm
6	150	13	37	20	8
7	7070	14	95 kg		

# Where Can I Find More Resources Like This?

- You can now visit my teaching resource website at <http://www.DrFog.co.uk>
- You can [click here](#) to search for more of my teaching resources.
- [Click here](#) to visit my **YES** shop!